

ANNUAL REPORT

20

**A YEAR OF
GROWTH & RESILIENCE**

24



**PCS Capital &
Endowment Fund**

Supporting Community Inspiring Growth

Dear Princeton Charter Community,

Once again I write this annual report with tremendous gratitude. In a year racked with uncertainty, our community came forward, as it always does, to support the students, faculty, staff, and the entire PCS community.

As an organization, we were also incredibly proud to underwrite two amazing events this year that are the ultimate demonstration of the Charter community.

In November 2024, we celebrated the retirement of Jeanne Nahan, a treasured faculty member who not only taught music, but was instrumental in choir and the other performing arts. As one of the "OG" faculty (hired soon after the inception of Charter), Jeanne left a legacy at Charter. The event saw an amazing turnout of alumni, alumni parents, faculty, and staff to celebrate her impact.

In the spring, we hosted our first-ever Alumni event. Underwritten by donations from the Endowment Board, Charter alumni gathered surrounded by the magnificent views given by Hudson Yards in NYC. With the school burgeoning on thirty years of existence, our alumni are now far-reaching, successful, and embodying the PCS values.

This year's annual report will focus on the most frequent questions we get from people as well as share some key data that we believe demonstrates the key contributions of the Endowment.

With gratitude,



Maryellen McQuade

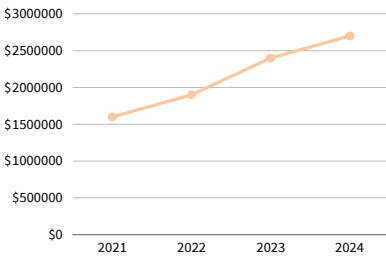
Chair, PCS Capital & Endowment Fund

maryellen@pcsendowment.org

As always, if you have questions or would like to get involved, please reach out.

So where does the Endowment stand?

Progression Over Past 4 Years & Past Year Allocation



N.B. The Endowment runs on July - June fiscal year. So this report marks the end of our 2024 Fiscal Year, which is June 30, 2025.

The assets under management for the Endowment have consistently grown, reflecting the generosity of our supporters as well as a prudent investment strategy.

With the school's budget approximately \$8.4 million, our goal remains to achieve \$4 million in the Endowment.

We adopt a conservative investment strategy, primarily allocating funds to S&P 500 vehicles while maintaining a healthy cash reserve.

The growth observed from 2022 to 2023 also indicates a shift in our investment strategy, as we redirected more capital into investments and reduced cash positions. This adjustment enabled us to capitalize on larger market gains.

In this fiscal year, the Endowment's contribution to the school was categorized as "closing the gap." During the 2024-2025 school year, PCS faced several unexpected cost increases, including rising expenses for buses, higher costs for substitute teachers, and a reduction in some annual grants.

The Endowment's expenses remain under 1% of total funds, primarily covering administrative costs, accounting assistance, and support for our events.

The Endowment by the Numbers

\$143,758

Total Donations for the Year

\$180,000

Contribution to PCS

109

Unique Donations

4

Number of Times We
Reach Out per Year

85%

Portion of Endowments
Funds Allocated to
Investment Accounts

13.6%

Returns For the Year From
Active Investment Accounts

Endowment's Board of Trustees

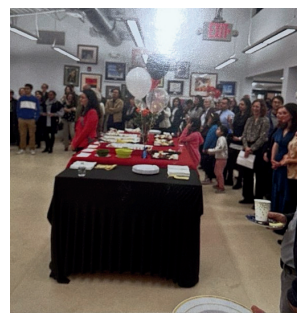
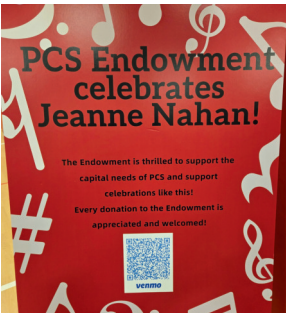
Rajesh Kumar, Treasurer
Rakesh Kumar, Vice President
Helena May, Secretary
Maryellen McQuade, Chair
Maureen Quirk, Member at Large
Peter Yianilos, Chairman Emeritus



Recognition Plaques at Charter



New kitchen functioning for the '25-'26 school year, as a result of the Endowment donation in 2024



Jeanne Nahan celebration



Alumni event - May 2025

FAQ About the Endowment

What's the difference between the Endowment and Friends?

The Endowment invests funds to support the school's long-term and capital needs. Friends raises money for the school's immediate, annual needs.

My company does not have the Endowment listed as an eligible matching organization, why?

Some companies won't match gifts to the Endowment because endowments are invested rather than spent right away. They want matching contributions to have an immediate charitable impact. If you don't see the endowment listed, we encourage you to direct matching gifts to PCS or Friends instead.

Where did the Endowment money go this year?

This year, unexpected costs and inflation put pressure on the school budget. The Endowment stepped in to help cover these needs—without reducing our long-term savings.



Alumni event - May 2025

How much is under management?

The Endowment is just under \$2.7M, conservatively invested in cash and securities. Our goal is to eventually hold 50% of the school's budget to safeguard against shortfalls and fund capital projects.

Why are donor bricks slow to be installed?

As a volunteer-led group, fundraising always comes first. Administrative tasks like brick installation can take longer, and we also avoid work during the school year for safety. We're committed to improving this process and appreciate your patience.

Thanks to Our Supporters

Contributors

Sarah and Mark Branon
 Burcu and Lionel Ruggeri
 Paul Feehan
 Lin Gu and Walker Ristau
 Xiaohua Lin and Weidong Wang
 Kathy and Jeffrey Liu
 Zhongsheng Wang
 Brandice and David Wrone
 Sakunthala Chundru and Ravi Kora
 Maria Kozhevnikova and Alexandre Morozov
 Chiara Nappi and Edward Witten
 Catherine and Neil Kurpiewski
 Maureen Quirk and Jeremy Goodman
 Carey and Ammar Shallal
 Jennifer and Donald Cipolla
 Poliana Patah and Pedro Henrique Silva
 Peijia Zha and Shenwei Zhao

Supporters

Boas and Charles Park*
 Sophia and Carlo Balestri
 Roxanna and Eugene Choe
 Elvira Davletgildeeva and Maurizio Clementi
 Shile Ding and Beibei Ji Ji
 Connie and Christopher Gregson
 Duanping He and Di Li
 Helen Keane and Andrew Sutphin
 Richard Kocharian and Sabina Khachatryan
 Jie Lu and Zhenyu Wu

Maria and Juan Maldacena
 Azza Shoaibi and Gowthan Rao*
 Hetal Weber
 Yang Yang and Xiaolong Shi
 Meilan Zheng and Renke Tan
 Lily Zou and Biao Luo
 Chetana Patsa and Prashant Kumar
 Danielle Beach and Grant Garrison
 Charlotte and Lenard Marcus
 Hui Cao and John A Weihe
 Chung-A Choi and Walter Kang
 Roopali Gupta and Ajay Dhoul
 Xiaoli Liang
 Rishi Modi
 Lijie Xu and Ji Li
 Nathalie de Leon and Jeff Thompson
 Marina and Xin Gu
 Li Ai and Martijn Wijnholt
 Promising Analytical Consulting Group
 Shuo Shuo Feng
 Nicholas Kikis and Moira Patterson
 Qing Li and Karen Gao
 Minzhi Liu
 Mingzhu Chen and Daniel Zhang
 Song (Sharon) Dai and Hong Guan
 Jill and Fernando Guerrero
 Helena May and Michael Zammit
 Yihau Wu and Bing Bai

Bricklayers

Christi Gautam
 Huan Guo and Peng Li

Rupal Kothari and Samir Undavia
 Anita Misri
 Shinae Park and Andrew Houck
 Marina Rubina and Anatoly Spitkovsky
 Andrew and Gloria Chen
 Zhe Huang and Qi Ou

Builders

Chaitra and Eric Baum
 Minisha Chahal and Cherag Daruwala
 Lydia Kang and Steven Yang
 Sophia and Rakesh Kumar
 Maryellen McQuade and David Chung
 Basab Chatterjee*
 Katherine and Joseph Morgan
 Ana Martin and Emanuele Gillio*
 Kamal Maruf and Rashda Chaudhary

Patrons

Robert and Doris Rivett
 Peter and Angela Yianilos

**Inclusive of Corporate Matching Gifts*

If you see an error, please reach out so we can correct it! While we've upgraded our systems we are still working through the kinks.



PCS Capital & Endowment Fund



pcsendowment.org



100 Bunn Drive
Princeton, NJ 08540